



# Services Eemshaven Solutions from a single source.

# Ems Maritime Offshore Solutions from a single source.



**Ems Maritime Offshore (EMO)** is a fully-owned subsidiary of Aktien-Gesellschaft "EMS" and was established in 2010 to expand the offshore activities of the AG "EMS" Group.

The energy of the future will to a large extent be generated at sea. As pioneers providing services for this future-oriented sector, EMO has recognised the signs of the energy turnaround at an early stage. Its declared long-term objective is to offer and establish customer-tailored service solutions sustainably.

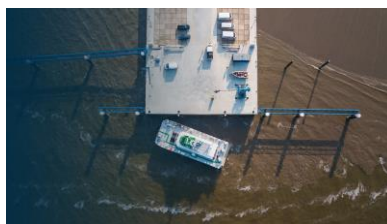
EMO operates its **own fleet of modern service vessels** flying the German flag, which are adapted for use in the offshore wind farms of the North Sea and the Baltic Sea. In addition to the standard activities of a certified shipping company, specialising in the particular requirements of offshore wind farms, EMO also provides the comprehensive services required in **various service ports close to the wind farm clusters**. This includes the provision of office, storage and field warehouse capacities as well as parking spaces and berths for service vessels. In the Netherlands, EMO operates the Heliport Eemshaven.

The comprehensive EMO service portfolio is rounded off by **Marine Coordination**, which includes the control of all logistical processes and maritime sea surveillance by the in-house control centre **VENTUSmarine**.

## Services




**Maritime Services**



**Port & Logistics Services**



**Technical & Engineering Services**



# Ems Maritime Offshore is your full service provider in Eemshaven.

EMO operates two modern **office and warehouse facilities** in Eemshaven, directly on the Beatrixhaven. The buildings comprise around 1.200 m<sup>2</sup> of warehouse space and 760 m<sup>2</sup> of office space. The site covers a total area of 3.6 ha and offers various possibilities for the settlement of offshore related companies.

Adjacent is the Heliport and DronePort, the public railway station as well as the ferry terminal of AG EMS Borkumlijn. The service base also includes a **150 m floating jetty**, the closest to the harbour entrance, where Crew Transfer Vessels and other service vessels can obtain exclusive berths.

Thanks to the comprehensive on-site infrastructure, EMO is your competent local partner in Eemshaven. Thanks to our VENTUSmarine control centre, our services are available to you **around the clock**. Benefit from our extensive expertise and make our location your project.

**EMO is your one stop service provider in Eemshaven, with extensive service facilities in a walk-to-work distance.**





# Agency Service

Thanks to our many years of experience in the offshore industry as well as a shipping company for offshore service vessels, we know exactly what our customers need in port. We take care of your needs in **Eemshaven, Lauwersoog and Delfzijl**. Benefit from our outstanding local network. We have access to an extensive infrastructure with strong partners at your side.

## 24/7 Vessel Agency Service

Supported by our own marine coordination center VENTUSmarine we support you **around the clock**.

## Stevedoring

We will assist you with efficient arrangement of port calls and crew changes from the organisation of a suitable berth to the responsible loading and unloading of goods.

## Individual Arrangements:

Our mission is to ensure that all vessels under our agency experience the best stay possible at the harbour. Our well-trained team takes care of your individual requirements, such as:

- Port call planning
- Crane service
- Transportation of goods
- Customs clearance
- Bunker fuels
- Taxi transfers
- Accommodation
- Waste disposal
- Permits and samples by third parties

### Your contact:

Michel Degenhart, *Logistics Operator*

✉ [agency@offshoreservice.de](mailto:agency@offshoreservice.de)

☎ +31 6 280 85 658

☎ +49 4921 8907 5555 (24/7 phone)

Supported by

**VENTUS**marine



# Heliport Eemshaven

## Heliport Eemshaven is your gateway for offshore flights.

Heliport Eemshaven is certified as international heliport and thus is the ideal gateway for transport and supply flights to offshore projects in the Exclusive Economic Zone in the North Sea. The total site covers an area of approximately 4.5 hectares, of which approximately 1.35 hectares is airfield. As well as a helicopter landing area, the site contains helicopter parking stands, an administration office and a fuel station.

### General Information

ICAO Code	EHHE
Heliport type	H2 / max. LOA 20m
Heliport reference point coordinates and site at heliport	53°27'39"N, 006°48'52"E
Communication frequency	121.715 Mhz
Direction and distance from (city)	1 NM North from Eemshaven
Elevation	+16,5 ft AMSL
Types of traffic permitted (IFR/VFR)	VFR / UDP
Maximum Take-off Weight (MTOW)	10.600 kg
Fuel station / Fuel type	Self-service / Jet A1
Remarks	Prior permission required (PPR)
Additional Information	Beware of kite surfers, 500m north west of the field



# Heliport Eemshaven

## Services



### Ground Operations

Planning and handling on site for your flight operations. We handle the complete check-in of passengers including safety instructions, customs and immigration.



### PPE Storage & Inspections

At Heliport Eemshaven we offer the possibility to store your personal protective equipment (PPE). Your equipment will be professionally monitored by our certified staff.



### Dangerous Goods

Our employees are certified according to IATA DGR CAT6, to check and handle any kind of dangerous goods with the highest responsibility and care.



### Fuel Station

Heliport Eemshaven is equipped with a self-service fuel station with a capacity of 40 cbm. Fuels supplied by Heliport Eemshaven meet the highest possible quality standards.



#### Your contact:

Jan-Hendrik van Laaten, *Heliport Manager*

✉ [heliport@offshoreservice.de](mailto:heliport@offshoreservice.de)

☎ +31 6 156 81 312



Photo by Niels Knelis Meijer

# DronePort Eemshaven

With **DronePort Eemshaven**, a centre has been established at Heliport Eemshaven from which innovative drone applications can be researched, initiated and carried out.

DronePort Eemshaven is being built on an **independent and open model**, with space for start-ups and scale-ups focusing on applicable unmanned robotics technology, sensors, autonomy and artificial intelligence.

## Application Areas

### Test Flights

- Long Distance Flights
- Cargo Delivery

### Inspections

- General Maintenance
- Blade Inspections

### Projects

- 5G Flying
- Cooperations with (scientific) universities
- Switching from German to Dutch airspace

## Infrastructure

- Specially marked take-off and landing area
- Control and operations room
- Workshop room



## Initiators





## Solutions from a single source.

OFFSHORE - SERVICE - LOGISTICS

Borkumkade 5  
NL-9979 XX Eemshaven  
+31 6 280 86 380  
eemshaven@offshoreservice.de  
www.offshoreservice.de



heliport@offshoreservice.de  
www.heliport-eemshaven.nl

EMO is a company of  group.

